



Near Edge Wax/Resin  
NET Mark IQ

## Near Edge Wax/Resin NET Mark IQ

### Good durability for near-edge applications

Produces dark, black bar codes and images with no show-through. With print speeds up to 24 IPS, NET Mark IQ is specially developed for near-edge printers such as TEC and Novexx, and flexible packaging coders such as Markem® and Videojet®.

*\*CleanStart feature is only available on tag and label ribbon configurations.*

#### Benefits

- Fast print speeds up to 24 IPS
- Wax/resin formula provides good scratch and smear resistance
- Dark black barcodes and images with solid fill and no show-through
- Broad stock latitude with notable performance on paper and film stocks

#### Recommended Stocks

- Coated and Uncoated Paper Tag & Label Stocks
- Polyolefin (i.e. Tyvek)
- Polypropylene
- Polyethylene



The printhead cleaner *built in* your ribbon.

### IIMAK Thermal Transfer Ribbons

NET FLEX	NET MARK IQ	NET RESIN IQ
	<p><b>Near Edge Wax/Resin</b> specifically designed for bolder, blacker imprints and fast processing in near edge printers.</p>	<p><b>Near Edge Resin</b> High durability to endure abrasion in demanding applications.</p>
<p><i>Wax Ribbons for General Purpose Labeling</i> GP725   HighMark</p>		
<p><i>Wax/Resin Ribbons for High Durability</i> PM308   Prime Mark</p>		
<p><i>Resin Ribbons for Maximum Durability</i> SP330</p>		
<p><i>Color Thermal Transfer Ribbons</i> DC100   DC200   DC400   NET Color</p>		
<p><i>Security Enhanced Thermal Transfer Ribbons</i> UV Invisible</p>		



310 Commerce Drive • Amherst, NY 14228  
Toll-Free: 888.464.4625 • Phone: 716.691.6333  
salesinfo@iimak.com • www.iimak.com



## Applications



Snack



Dairy



Produce



Medical



Health/Beauty



Retail



Hang Tags



Compliance

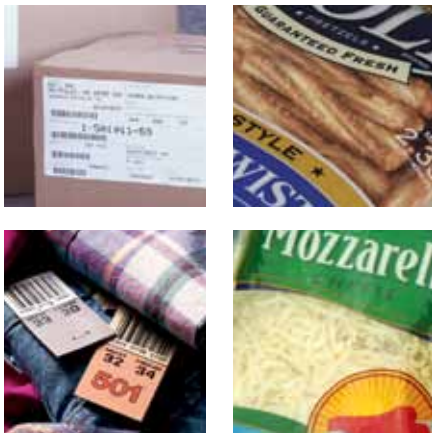


Shipping

# NET Mark IQ

## Near Edge Wax/Resin

Good printing performance at high print speeds of 24 IPS on a wide range of paper and film stocks. NET Mark IQ is specially developed for near edge printers including TEC, Novexx, Avery, and flexible packaging coders Markem® and Videojet®.



### Imaging Characteristics

Printer	Print Speed	Energy Range
Near-Edge	24 IPS	Low - Mid

Image Darkness	Scratch/Smudge	Chemical
>1.7 RD (densitometer)	Mid-Range Resistance	Moderate Resistance



The printhead cleaner built in your ribbon.

### Technical Specifications

Color Code Tab	Copper
Film Thickness	4.5 Microns
Total Ribbon Thickness	8.0 Microns
Transmission Density	1.10 MacBeth Scale
Ink Melting Point	70°C/158°F

### Typical Compliance

- REACH – SVHC Free
- RoHS/WEEE
- TSCA
- CONEG
- California Proposition 65
- FDA GRAS Recognized
- FDA 21CFR175
- ISEGA Approved
- MSDS available at [www.iimak.com](http://www.iimak.com)
- Additional Regulatory Requirements Upon Request

## Industry Leading Customer Service

- Free Clean Start® built-in printhead cleaner
- Free samples
- Free technical support 888.372.0137
- Free 24-hour print tests
- Over 500 SKUs stocked for same-day shipping
- Complete line of over 2,500 SKUs



310 Commerce Drive • Amherst, NY 14228  
Toll-Free: 888.464.4625 • Phone: 716.691.6333  
[salesinfo@iimak.com](mailto:salesinfo@iimak.com) • [www.iimak.com](http://www.iimak.com)  
Thermal Transfer Ribbons made in the USA